



From:

Bolution  esources



FineTest



Sangon Biotech
PART OF BBI LIFE SCIENCES



We offer great range of assays kits, ELISA kits, CLIA Kits, antibodies, recombinant proteins, and etc for the study & research of Apoptosis, Metabolism, Cell Proliferation, Cellular Stress, Cell Damage and Repair, Diabetes, Obesity and Metabolic Syndrome, Stem Cell Biology, Gene Regulation, Signal Transduction and etc.

Available for range of species such as human, mouse, rat, bovine, canine, monkey, chicken, duck, camel, goat, rabbit, sheep and etc

Other brands offering diiferent testing parameters:

Elabscience[®]

Human & animal diseases, biochemistry assay, mycotoxins and food safety and others



Food research assay kits & chemicals, enzymes, enzymes substrates, carbohydrates

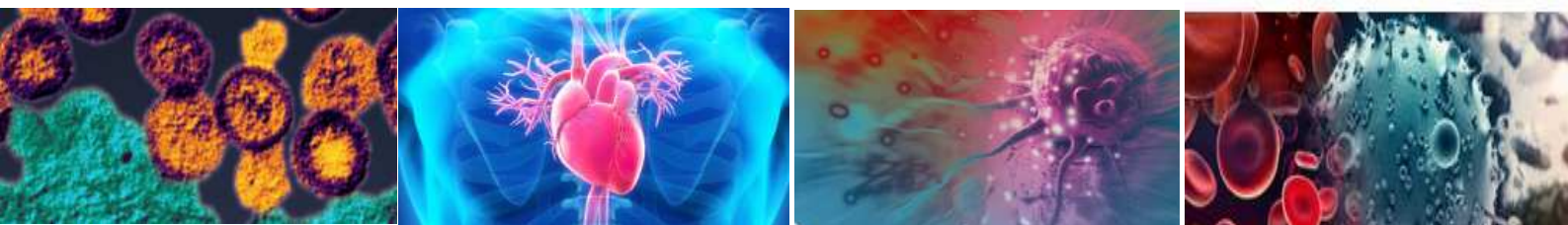


Plant disease & pathogens Elisa & Rapid test strips



Beijing Kwinbon Biotechnology CO., LTD.

Food safety testing kits for mycotoxins, antibiotic residues, adulteration, hormones residues, microbiological testing



More more info, please contact Ho Yew Fei (Mr) , BIOLUTION RESOURCES (002247091-D)

No. 11, Jalan Bunga Melati 14, Taman Seraya, Ampang, 68000, Selangor, Malaysia Hp: +6016-8988 958